



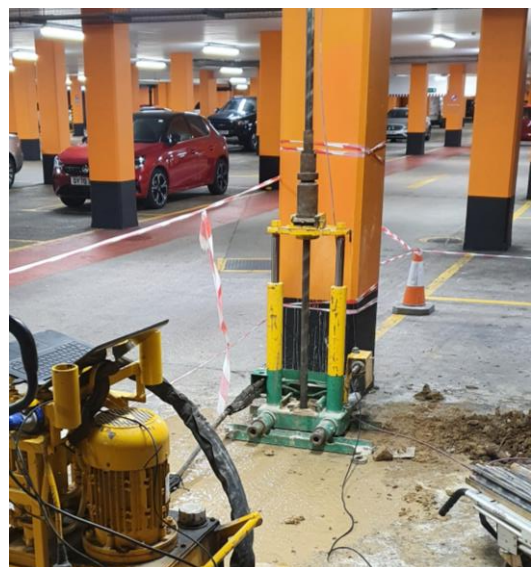
UK10 Basement CPT rams



Rig weight	70 kg
Maximum operating ram capacity	10 T
Height	850 mm
Width	500 mm
Depth	230 mm
Maximum testing gradient	Unlimited
Minimum working height	2.0 m
Noise output at 2 m	Less than 65dBA
Clamp arrangement	36/55 push-pull clamp
Ram stroke	0.50 m
Maximum casing size	55 mm
Power pack	415 v 3-phase

These hand-portable rams are supported by a power pack, generator and data-logging unit. The rams are anchored to the ground or wall with concrete bolts to provide the reaction force.

This unit is ideal for testing in confined spaces such as warehouses or basements and can be mounted at angles to facilitate horizontal testing in tunnels.





UK26

Basement CPT rams



Rig weight (when set-up)	116kg
Maximum individual component weight	85kg
Maximum operating ram capacity	10T
Height	1185mm
Footprint width	310mm
Footprint length	880mm
Maximum testing gradient	Unlimited
Minimum working height	2.4m
Noise output at 2m	Less than 65dBA
Clamp arrangement	Ball bearing clamp
Ram stroke	0.74m
Maximum casing size	55mm
Power pack	415v 3-phase
Standard concrete bolt size	Length – 150mm Diameter – 14 or 16mm

These hand-portable rams are modular for ease of movement between locations and are supported by a power pack, generator and data-logging unit. The rams are anchored to the ground or wall using concrete bolts to provide the reaction force.

This unit is ideal for testing in confined spaces such as warehouses or basements and can be mounted at angles to facilitate horizontal testing in tunnels.

